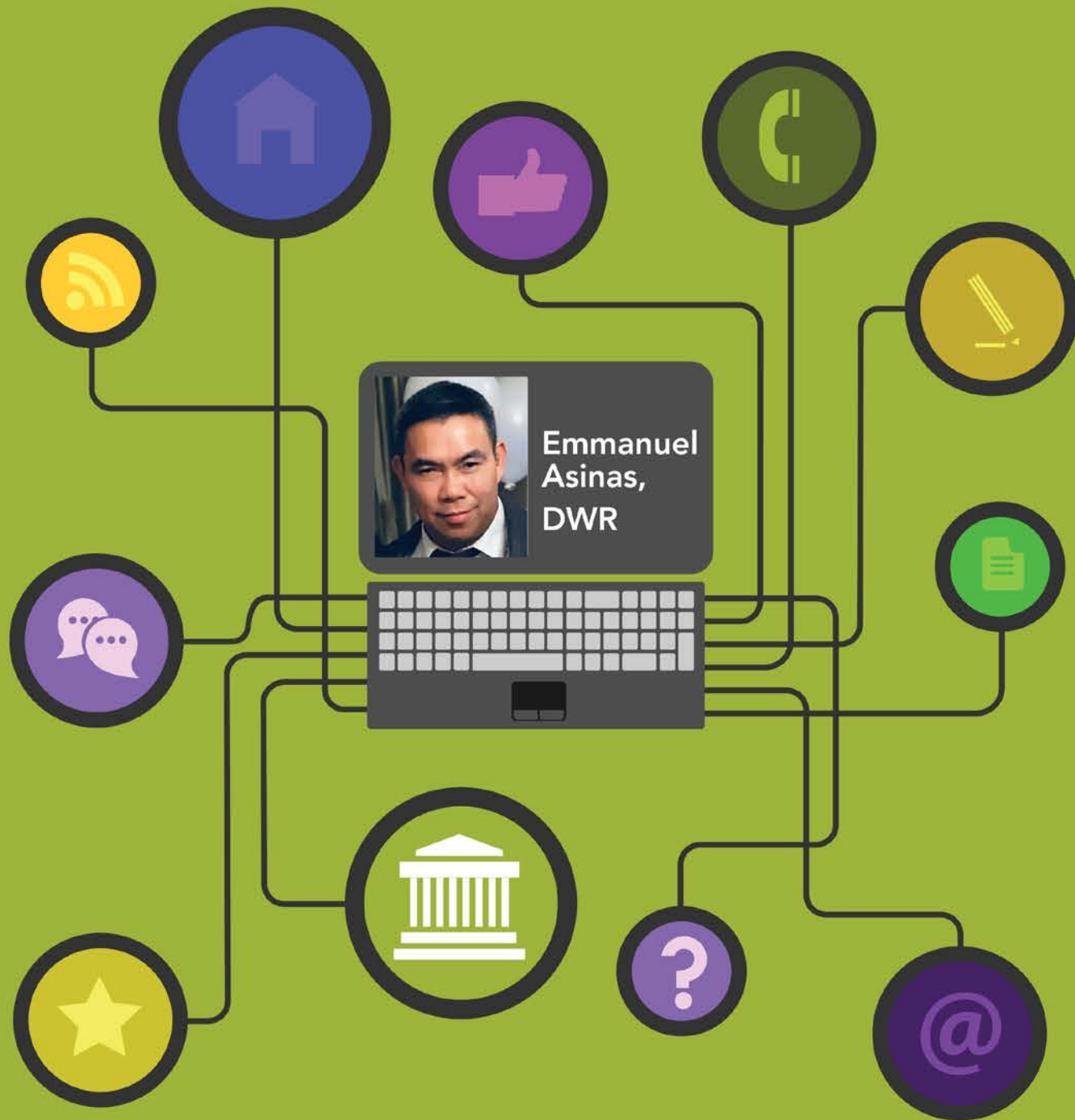


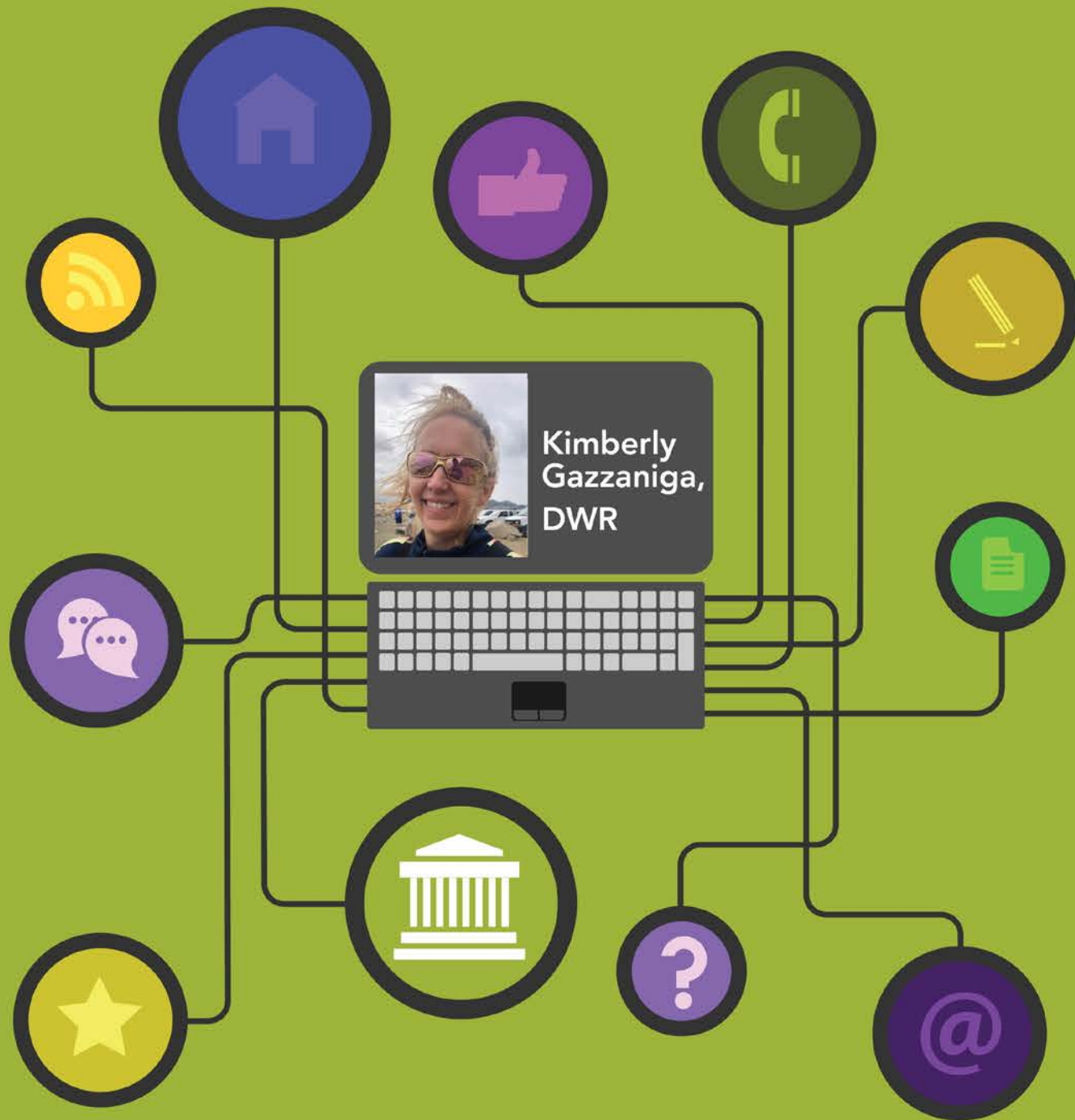
# TeleTeam

*"Make Telework Work"*



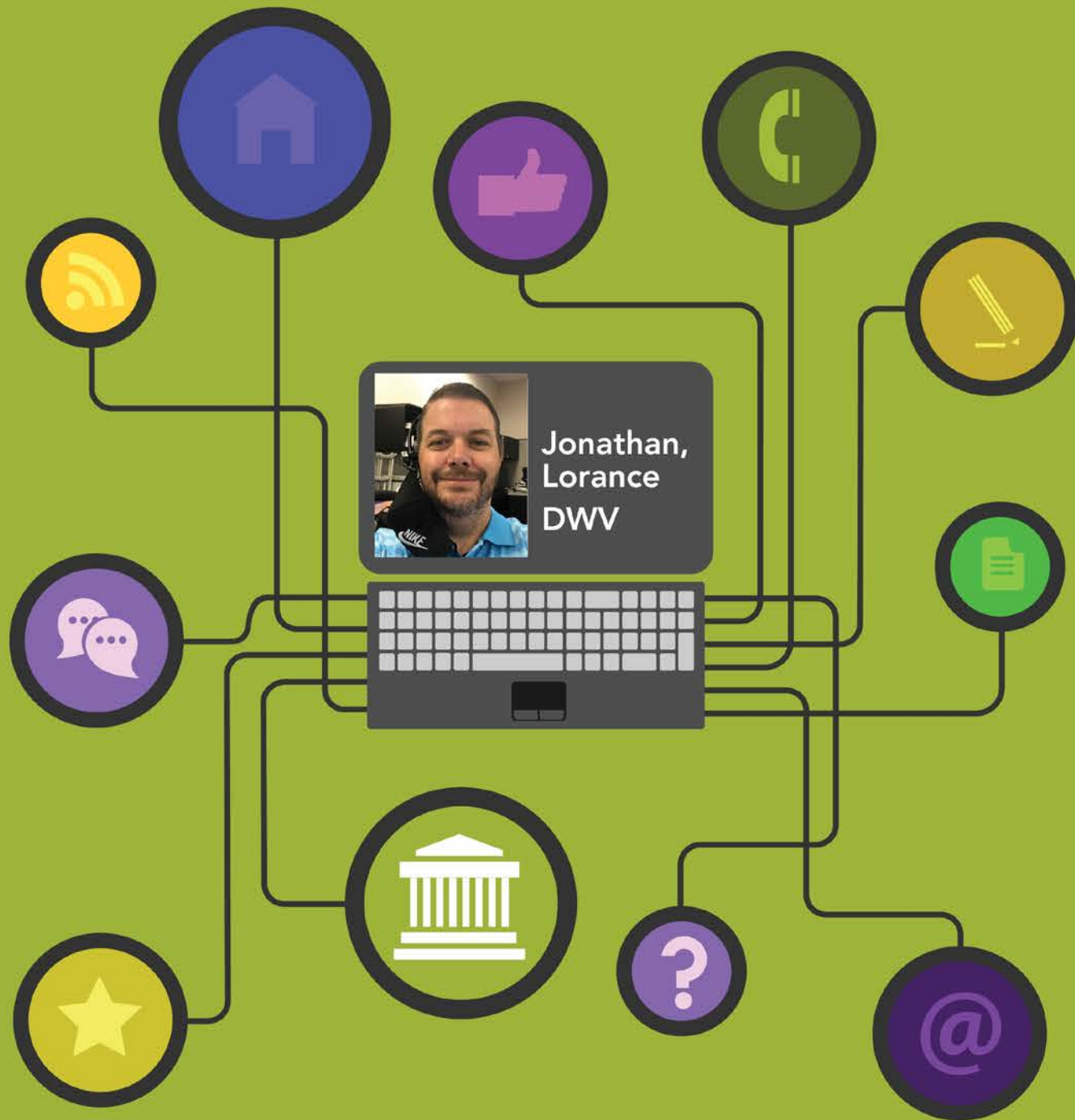
# TeleTeam

*"Make Telework Work"*



# TeleTeam

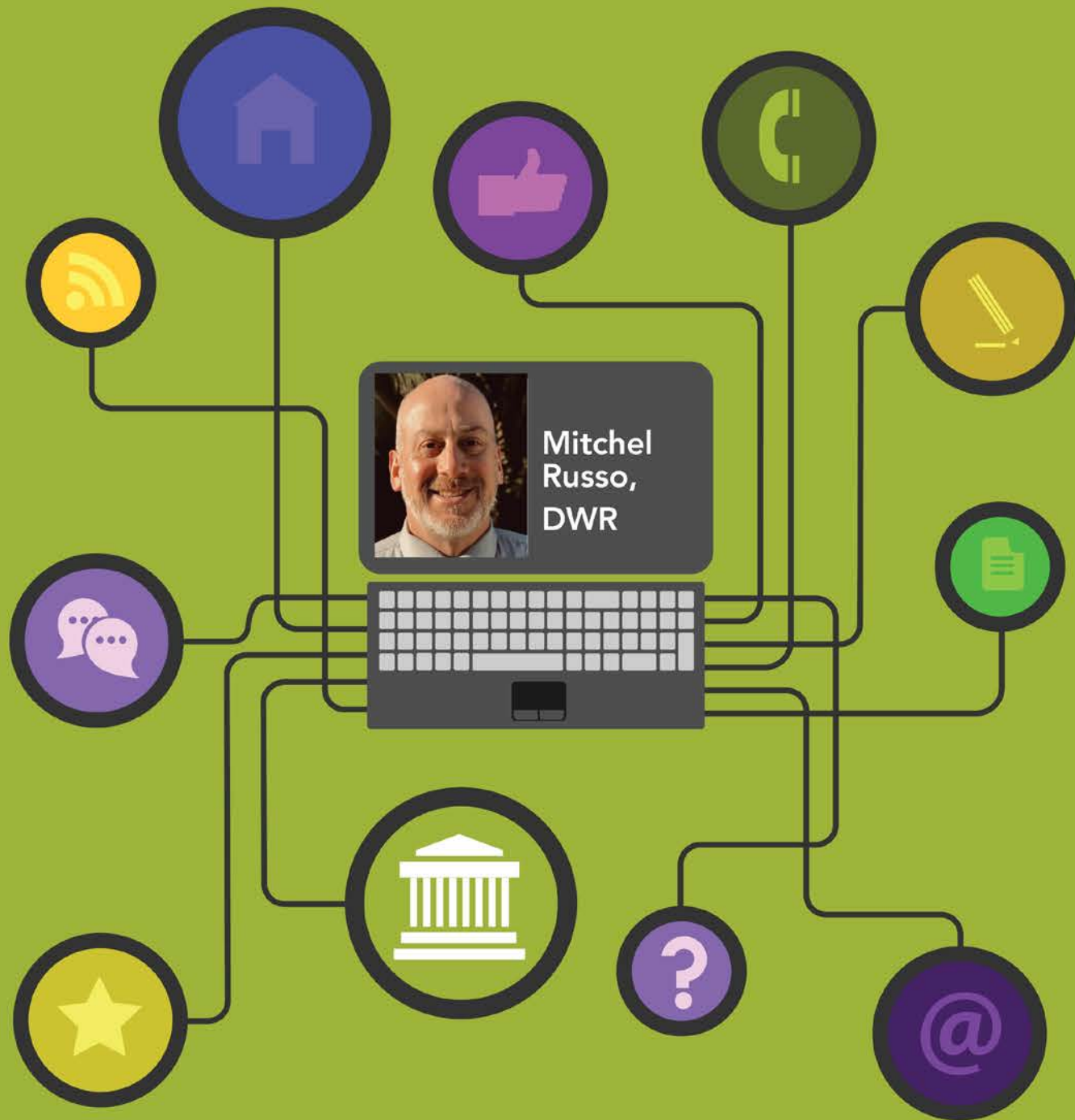
*"Make Telework Work"*



# TeleTeam

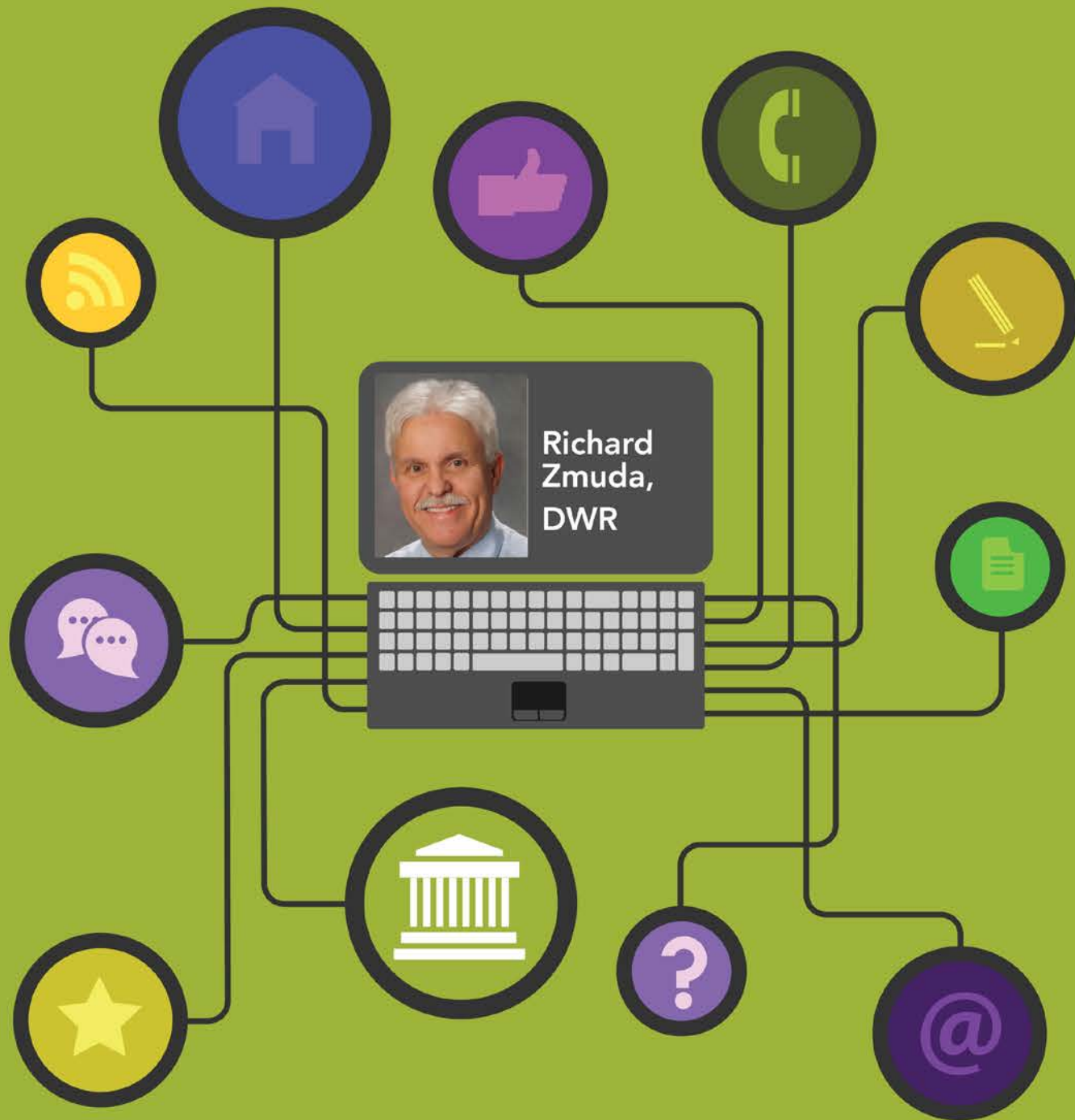
*"Make Telework Work"*





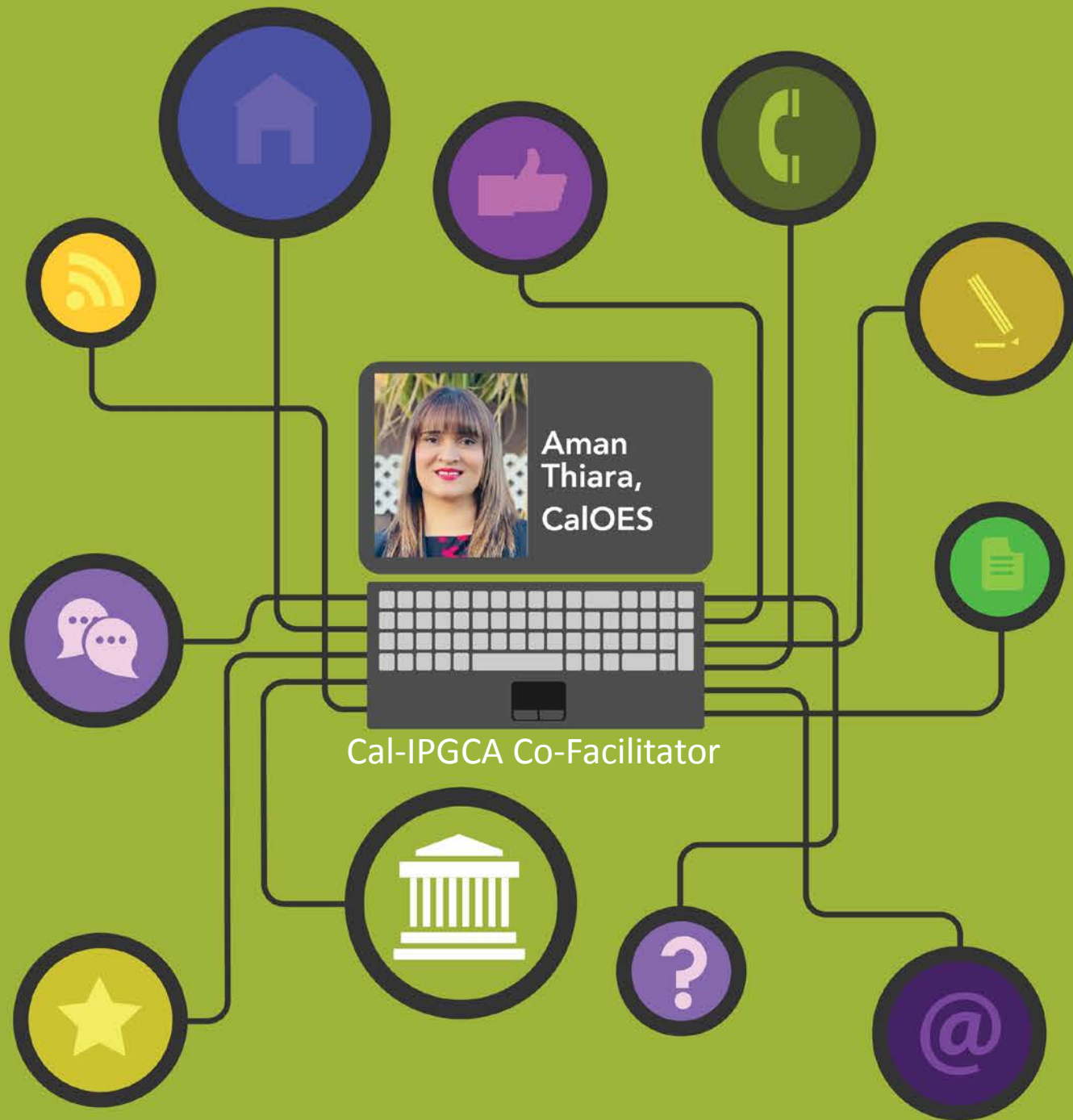
# TeleTeam

*"Make Telework Work"*



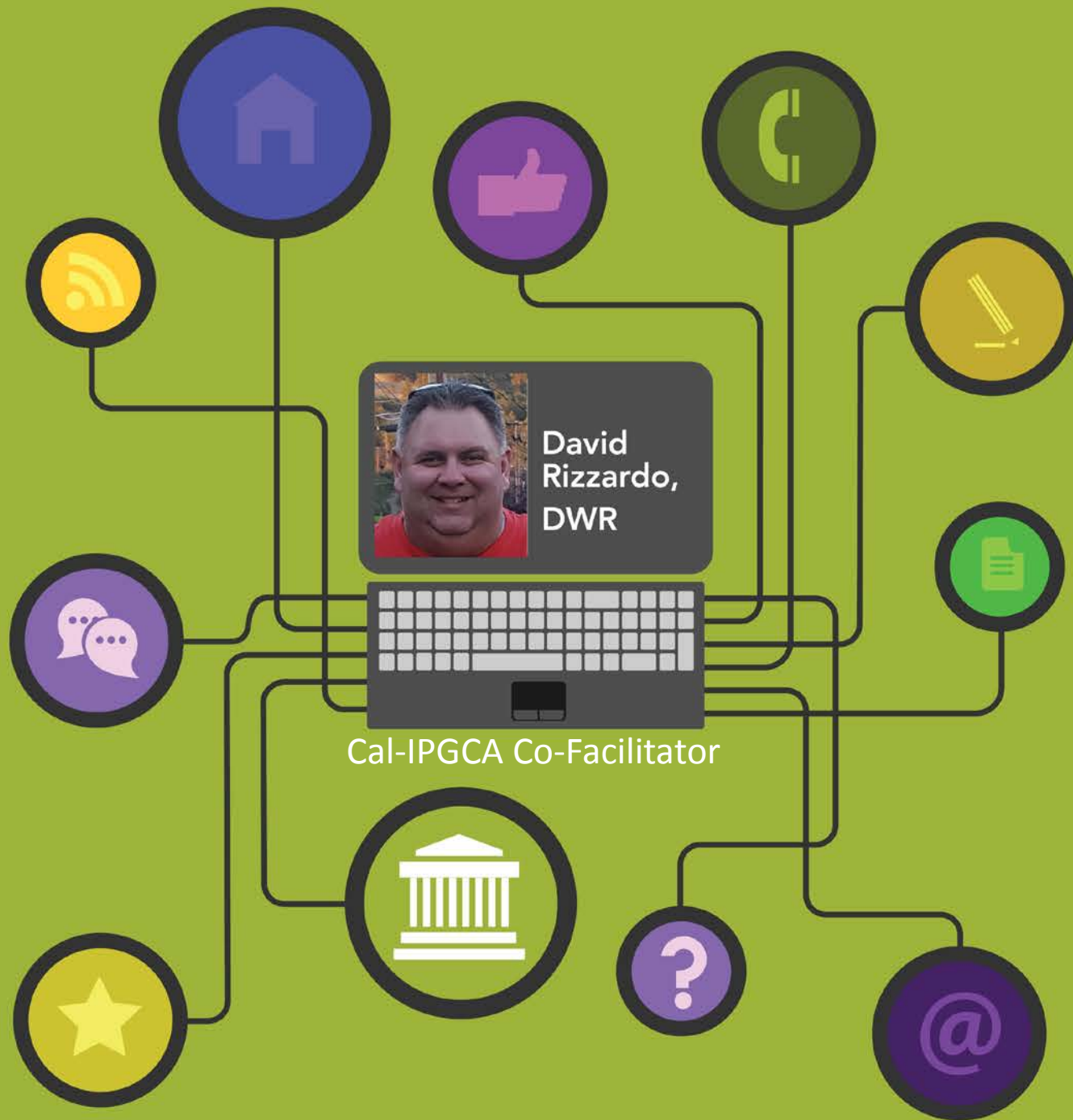
# TeleTeam

*"Make Telework Work"*



# TeleTeam

*"Make Telework Work"*



# TeleTeam

*"Make Telework Work"*





It's time to  
**REIMAGINE**  
our workplace





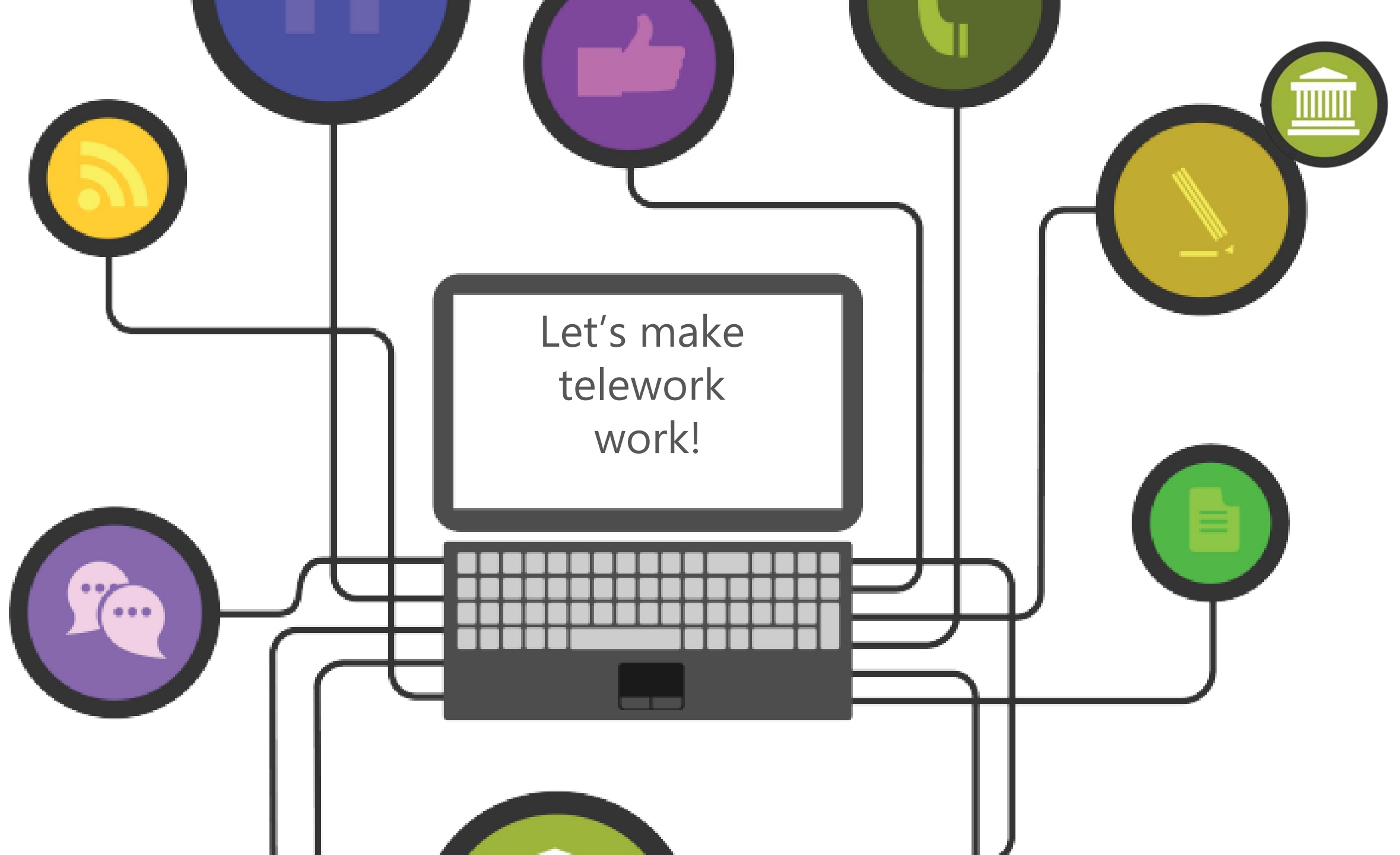
*"We have been busy reimagining our workplace...as we return from the pandemic, our vision is to provide more flexibility for employees, innovate and improve the ways we collaborate, and help us all thrive both in the workplace and in our lives."*

*-Secretary Crowfoot*





# Telework







Consolidation.  
Consistency.



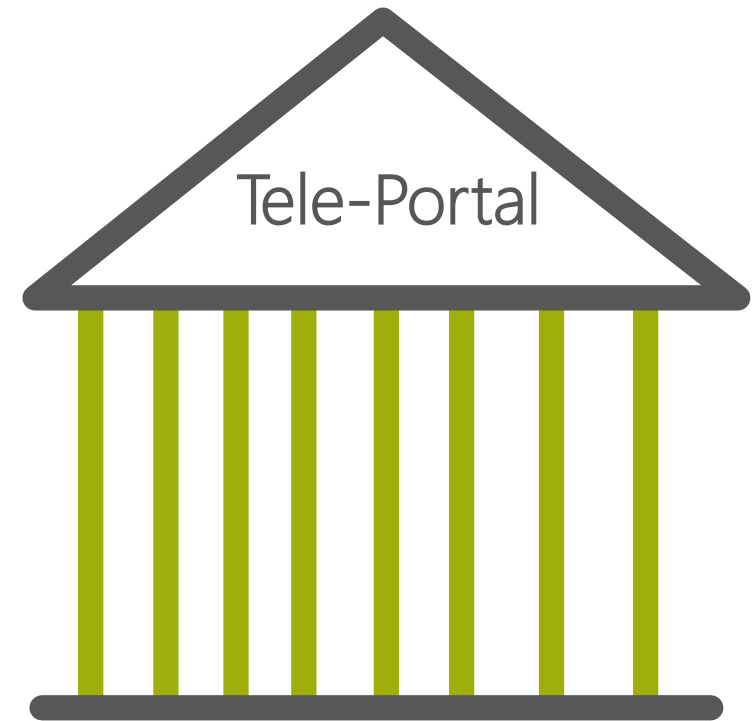
# Tele-Portal

a web-based conceptual model



The Tele-Portal concept is based on the following supporting ideas, or pillars:

1. Data & Statistics
2. Telework Toolbox
3. Best Practices
4. Telework Tour Guide
5. Bulleting Board
6. Survey Results/Research Resources
7. Human Resources
8. Diversity, Equity, & Inclusion



## Tele-Portal Pillar 1: Data & Statistics







Insert graphic/picture illustrating idea

## Tele-Portal Pillar 2: Telework Toolbox





Insert graphic/picture illustrating idea

## Tele-Portal Pillar 3: Best Practices







Insert graphic/picture illustrating idea

## Tele-Portal Pillar 4: Telework Tour Guide





Insert graphic/picture illustrating idea

Tele-Portal Pillar 5:  
Bulletin Board

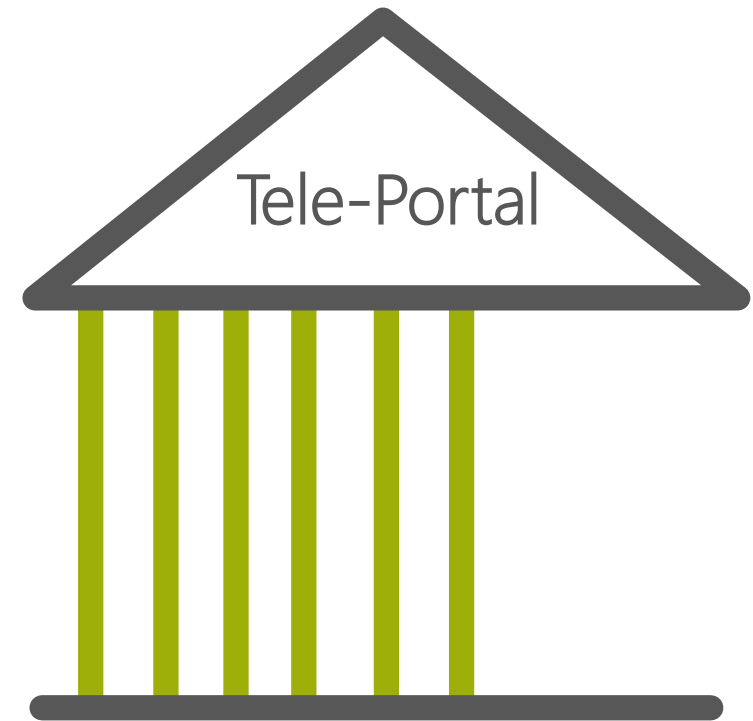






Insert graphic/picture illustrating idea

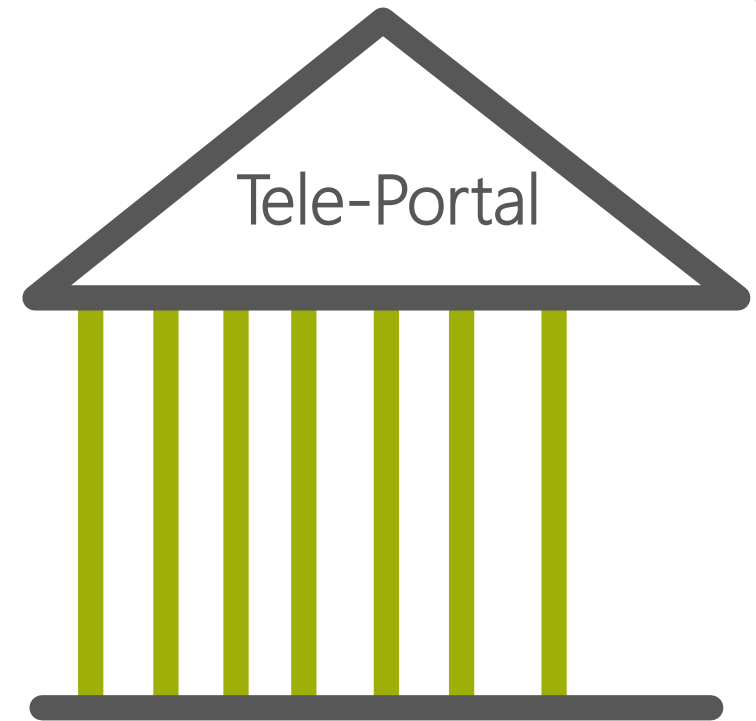
## Tele-Portal Pillar 6: Survey Results/Research Findings





Insert graphic/picture illustrating idea

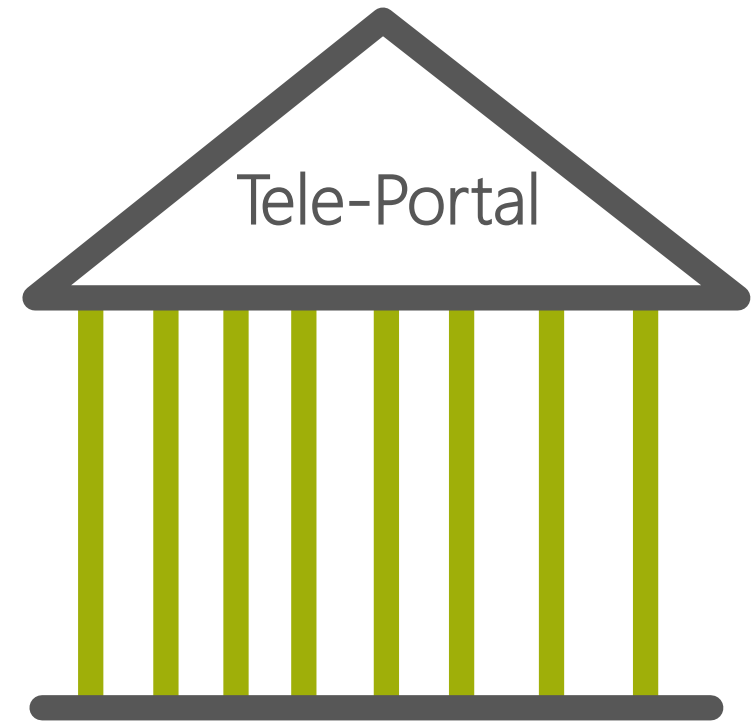
## Tele-Portal Pillar 7: Human Resources





Insert graphic/picture illustrating idea

Tele-Portal Pillar 8:  
Diversity, Equity, & Inclusion

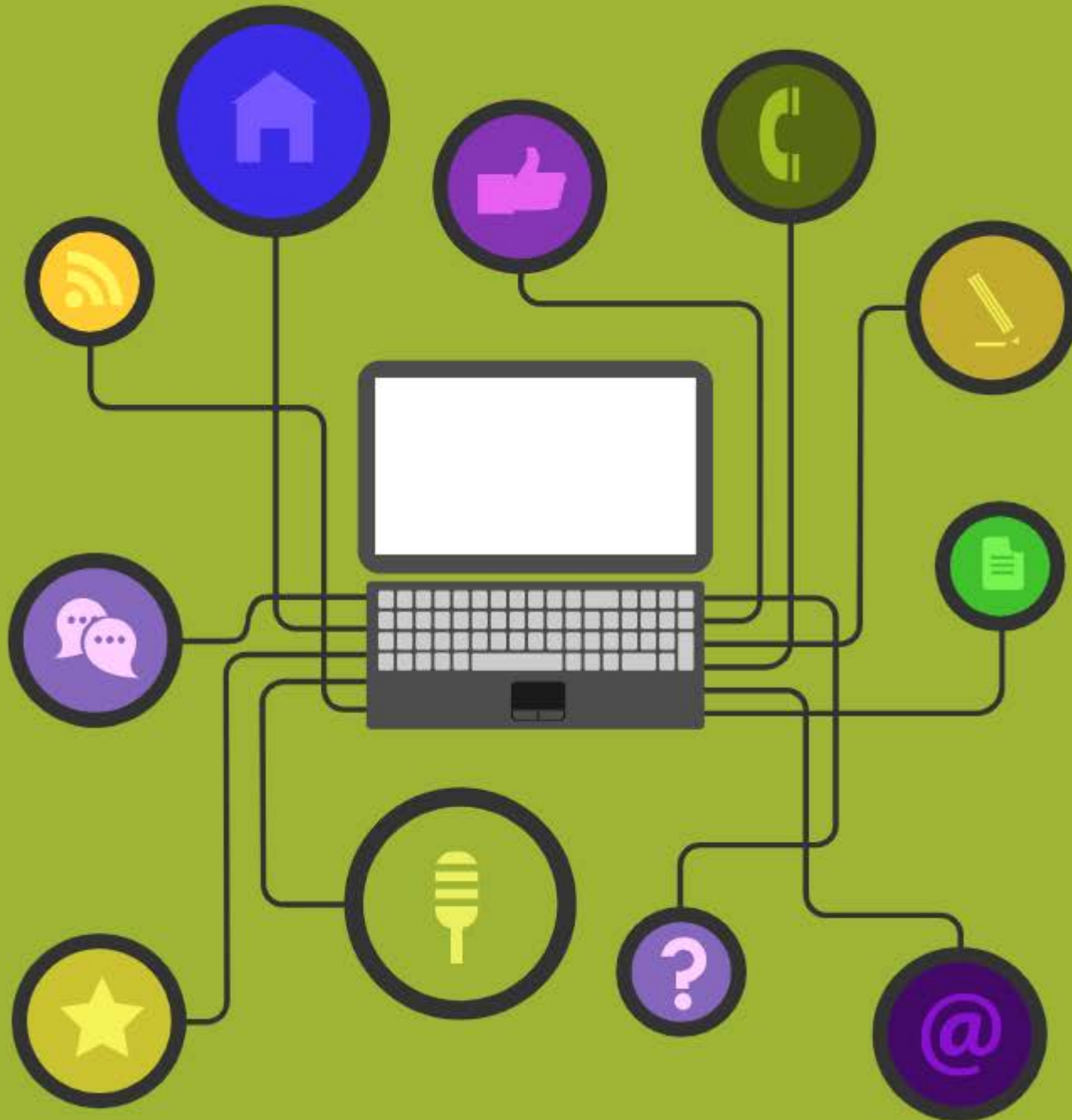






Insert graphic/picture illustrating idea





# TeleTeam

*"Making Telework Work"*



Not sure we need to use this (since it may be in our video intro?)  
But here is the info, make slides and incorporate where needed:

**Problem statement**

The COVID-19 pandemic detonated worldwide in early 2020 and forced the California state government to hastily adopt remote work operations (telework). Almost literally overnight the pandemic forced government leaders to overhaul on the fly long-standing work policies and procedures from primarily on-site operations to remote work processes. This unplanned transformation resulted in a patchwork quilt of inconsistent and often confusing telework approaches across state government operations that stirred conflicts within the state's workforce and interfered with effective delivery of state services.

**Urgency statement**

California's overnight telework transformation of government services underscored the need for cultivating an agile and adaptable work culture that embraces innovation. Easing COVID-19 restrictions in mid-2021 is injecting renewed uncertainty about the state's workforce policies and threatens to undermine the productivity gains achieved through telework.

**Moonshot**

TeleTeam proposes development of **Tele-Portal**, a web-based conceptual model designed to promote informed, consistent, and inclusive telework decisions by all levels of State agency leadership and by rank-and-file workers.